
3.8V-28V Vin, 5A Synchronous Step-down DCDC Converter with EMI Reduction

FEATURES

DESCRIPTION

- Spread Spectrum

APPLICATIONS

RECOMMENDED OPERATING CONDITIONS

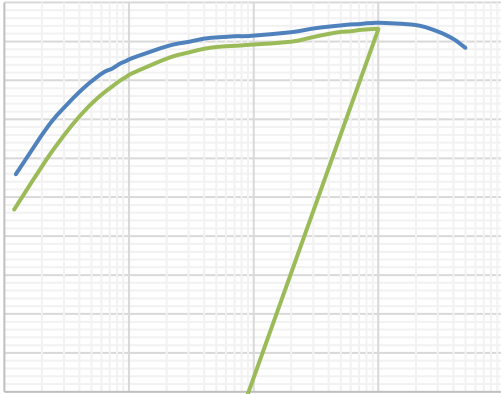
ESD RATINGS

- (1)
- (2)

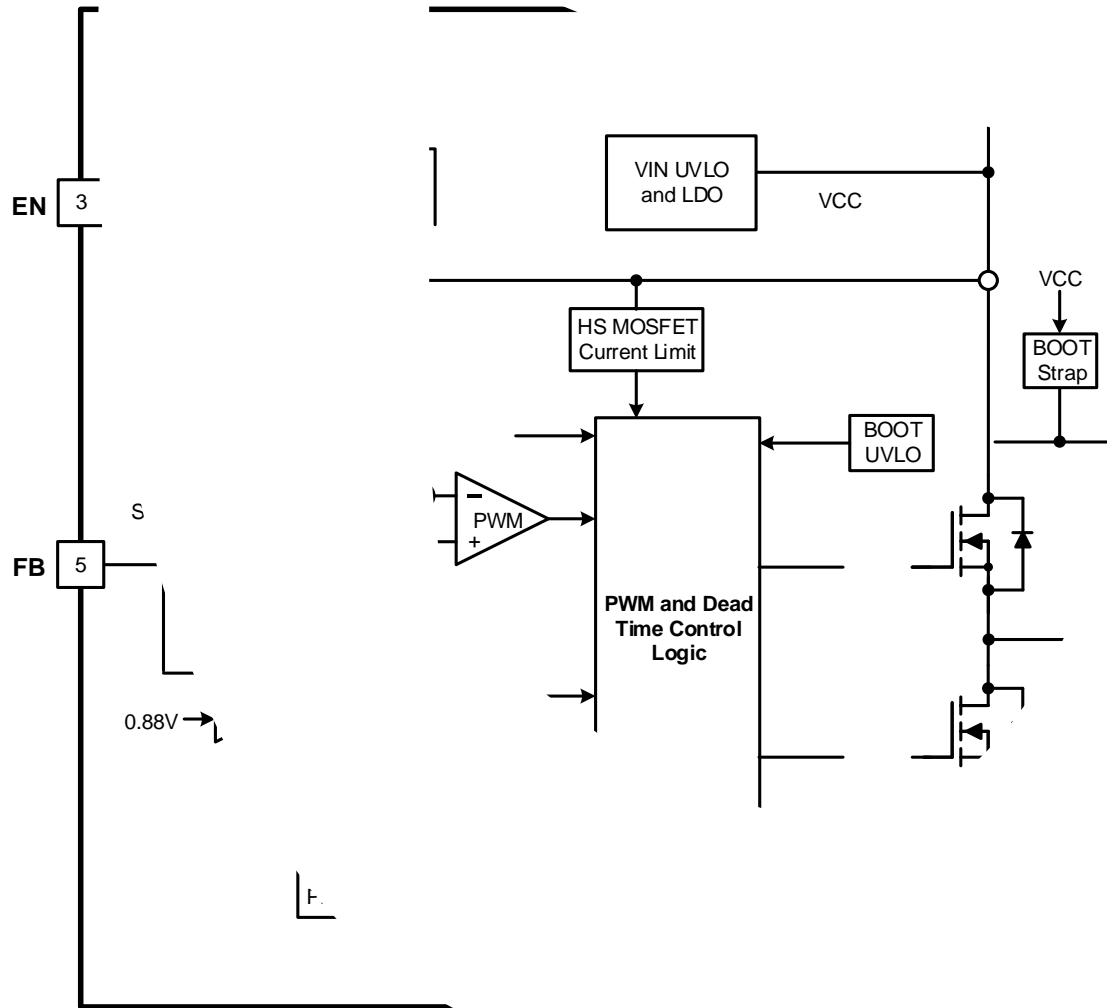
THERMAL INFORMATION

ELECTRICAL CHARACTERISTICS

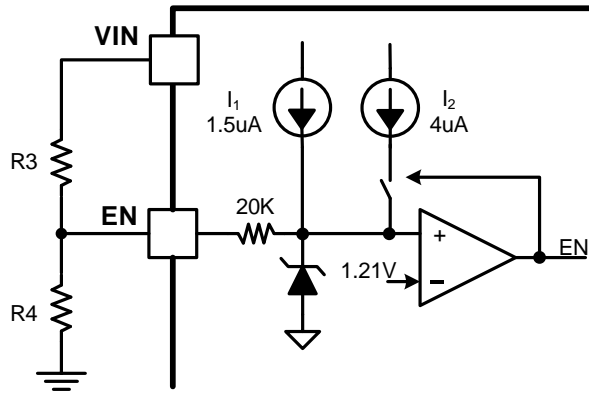
TYPICAL CHARACTERISTICS



FUNCTIONAL BLOCK DIAGRAM



OPERATION

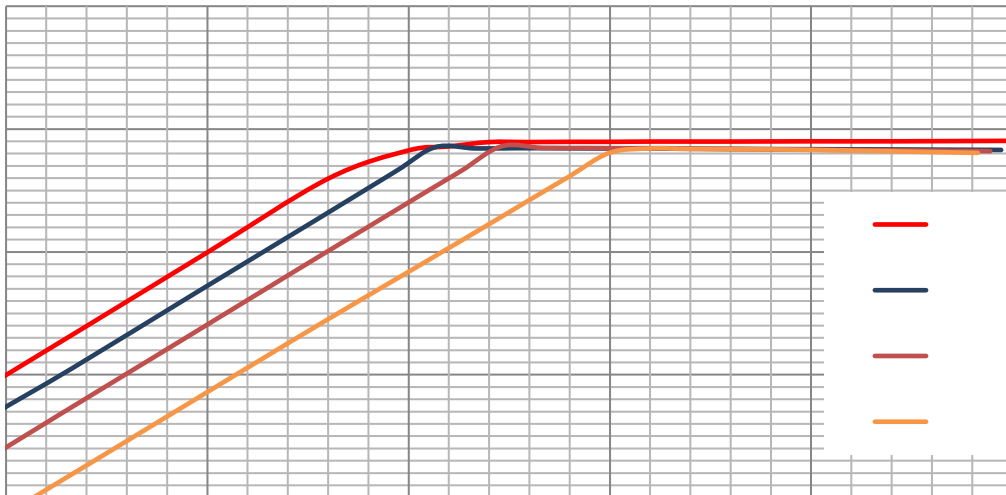


—
 —————
 —

(1)

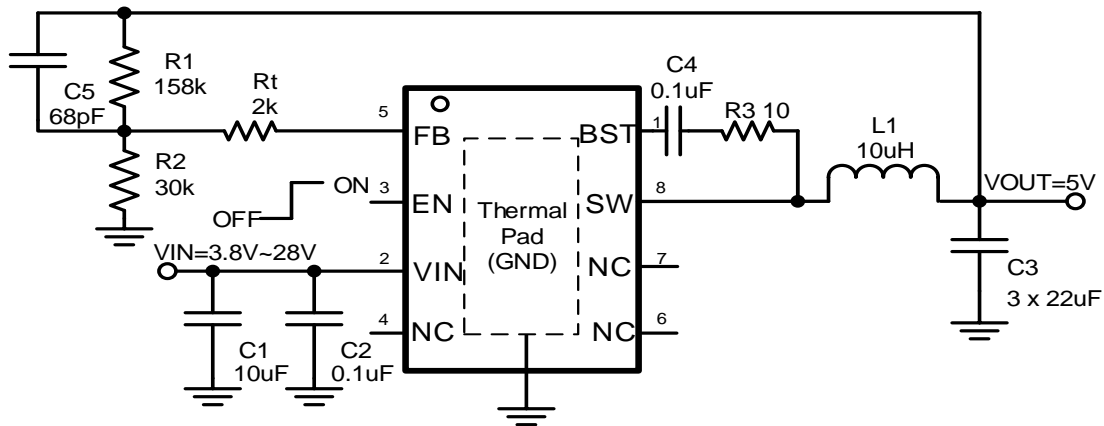
—————

(2)



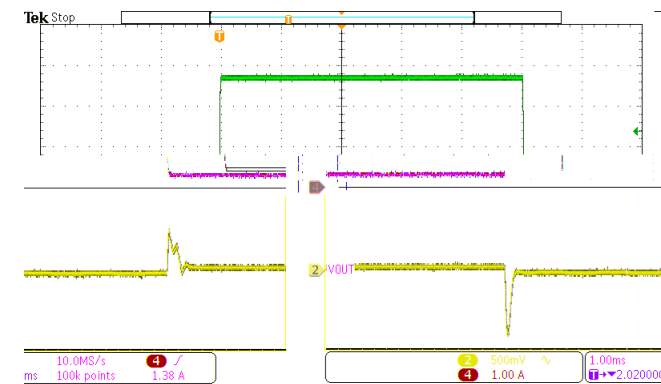
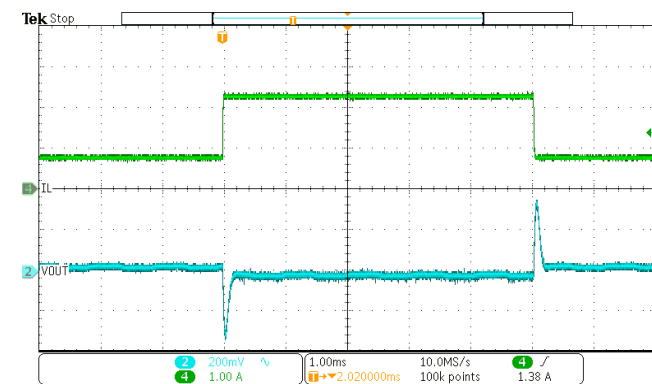
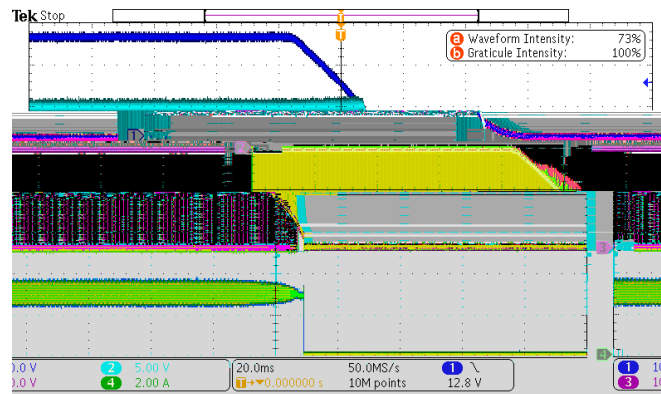
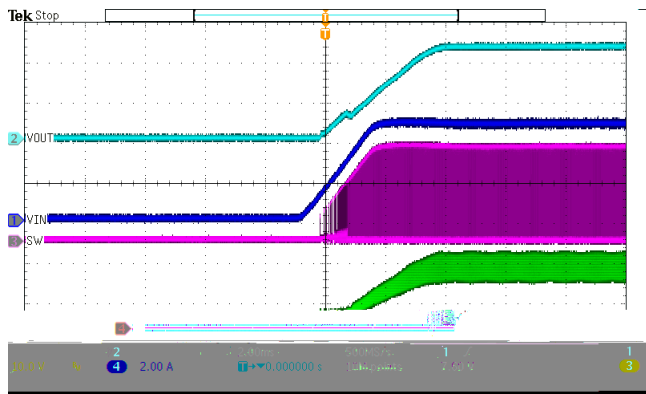
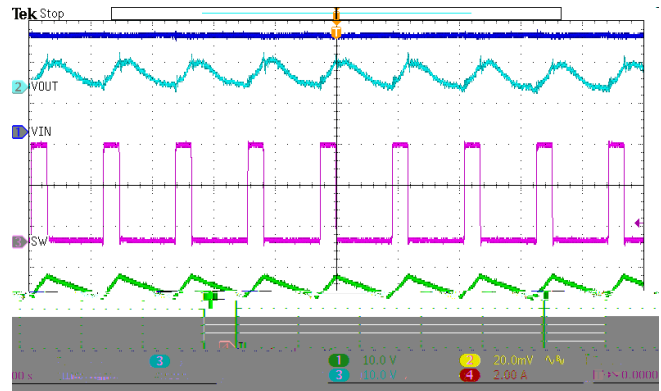
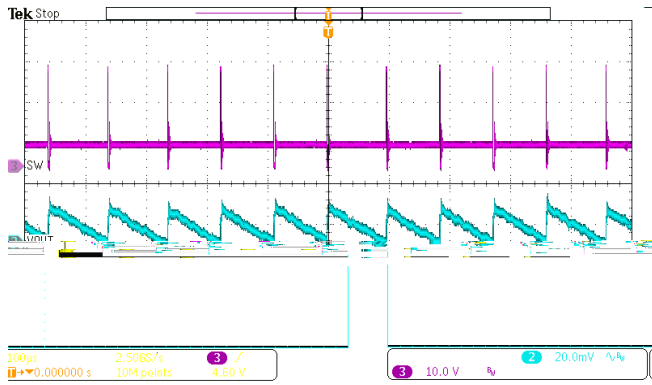
o
o

APPLICATION INFORMATION



Design Parameters	Example Value
Input Voltage	24V
Output Voltage	5V
Output Current	3A
Output voltage ripple (peak to peak)	±0.3V
Switching Frequency	400kHz

(3)



TAPE AND REEL INFORMATION