

- D ED 9 D9 E - B E * D C

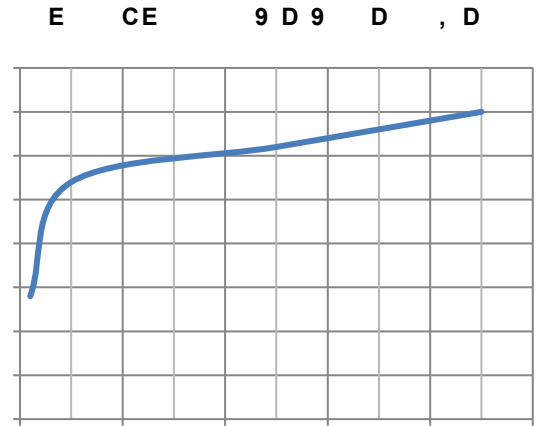
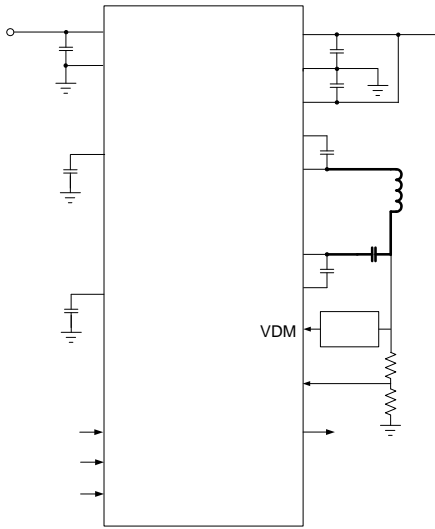
FEATURES

-
-
-
-

SCT CONFIDENTIAL

) *

TYPICAL APPLICATION



REVISION HISTORY

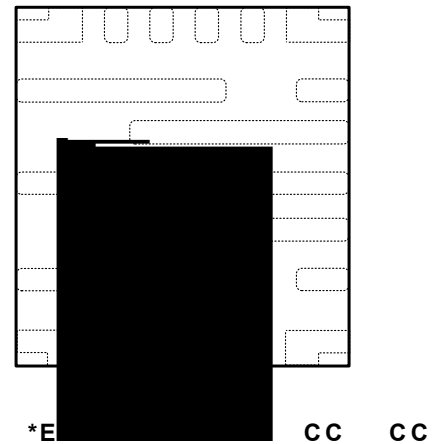
DEVICE ORDER INFORMATION

,	*)*	*)) *)

ABSOLUTE MAXIMUM RATINGS

) *	.	*

PIN CONFIGURATION



) *

RECOMMENDED OPERATING CONDITIONS

*	*		.	*

ESD RATINGS

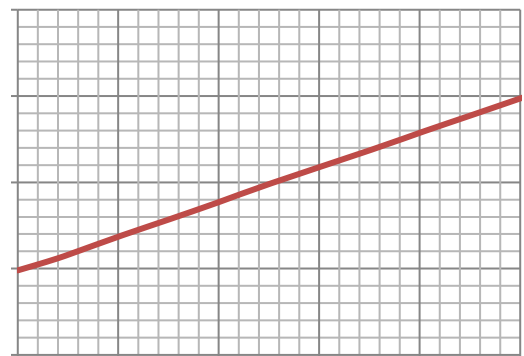
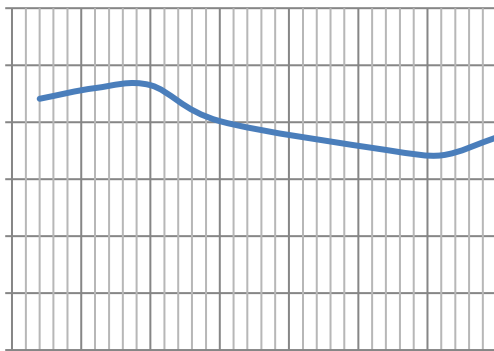
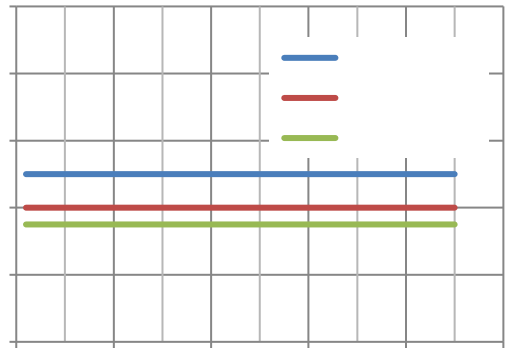
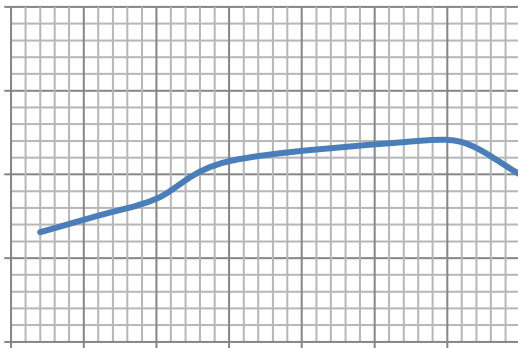
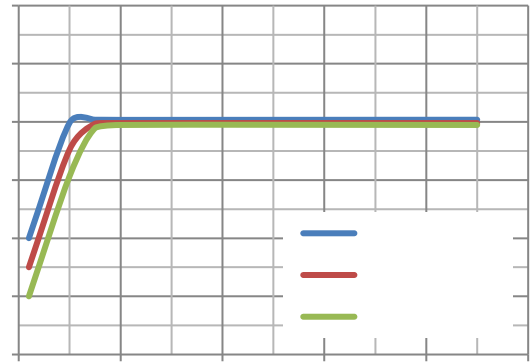
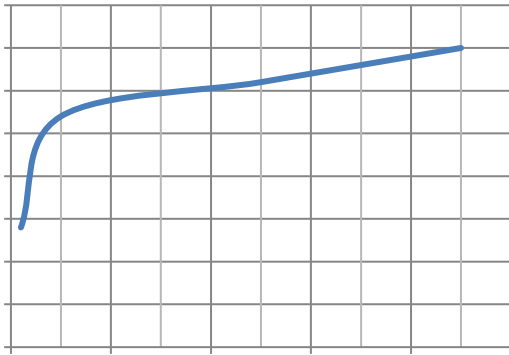
*	*		.	*

THERMAL INFORMATION

*	*	*	*	.	*

SCT CONFIDENTIAL

TYPICAL CHARACTERISTICS



SCT CONFIDENT

SCTCO

SCT CONFIDENTIAL

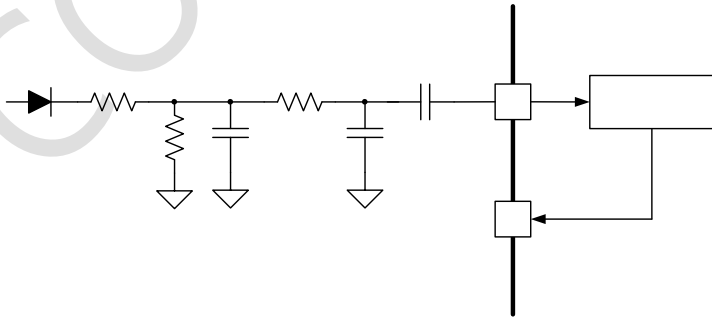
) *

E E

9 E 9 ED

⋮

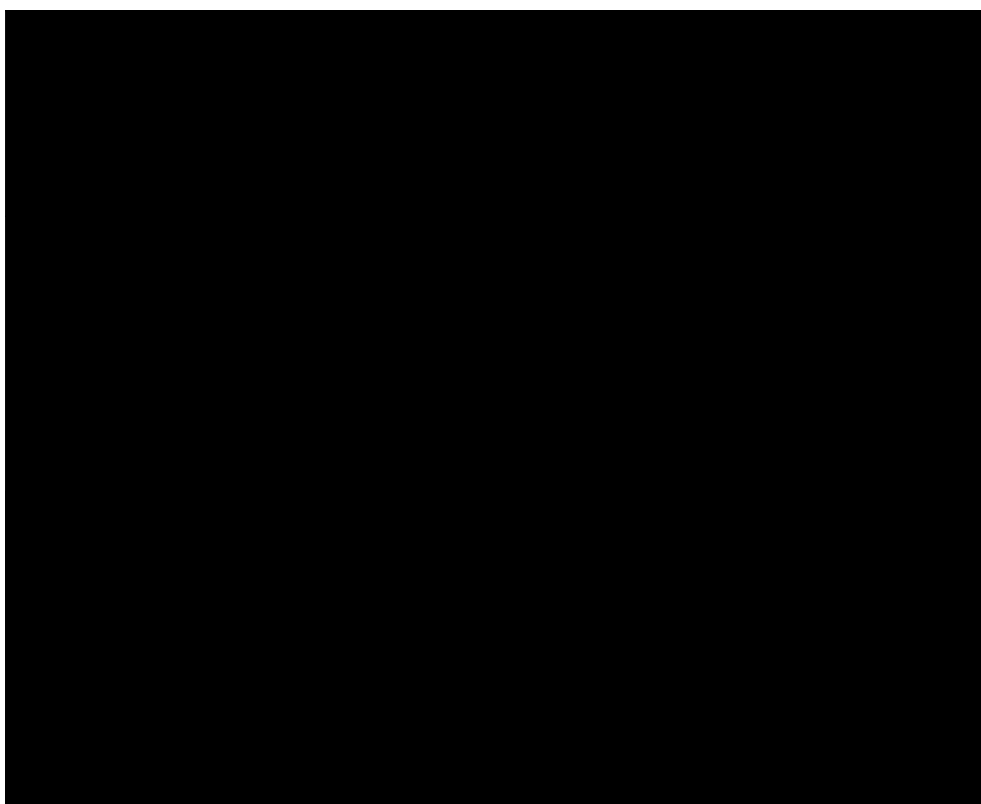
, EB D D CE B ED



* C B) E D

APPLICATION

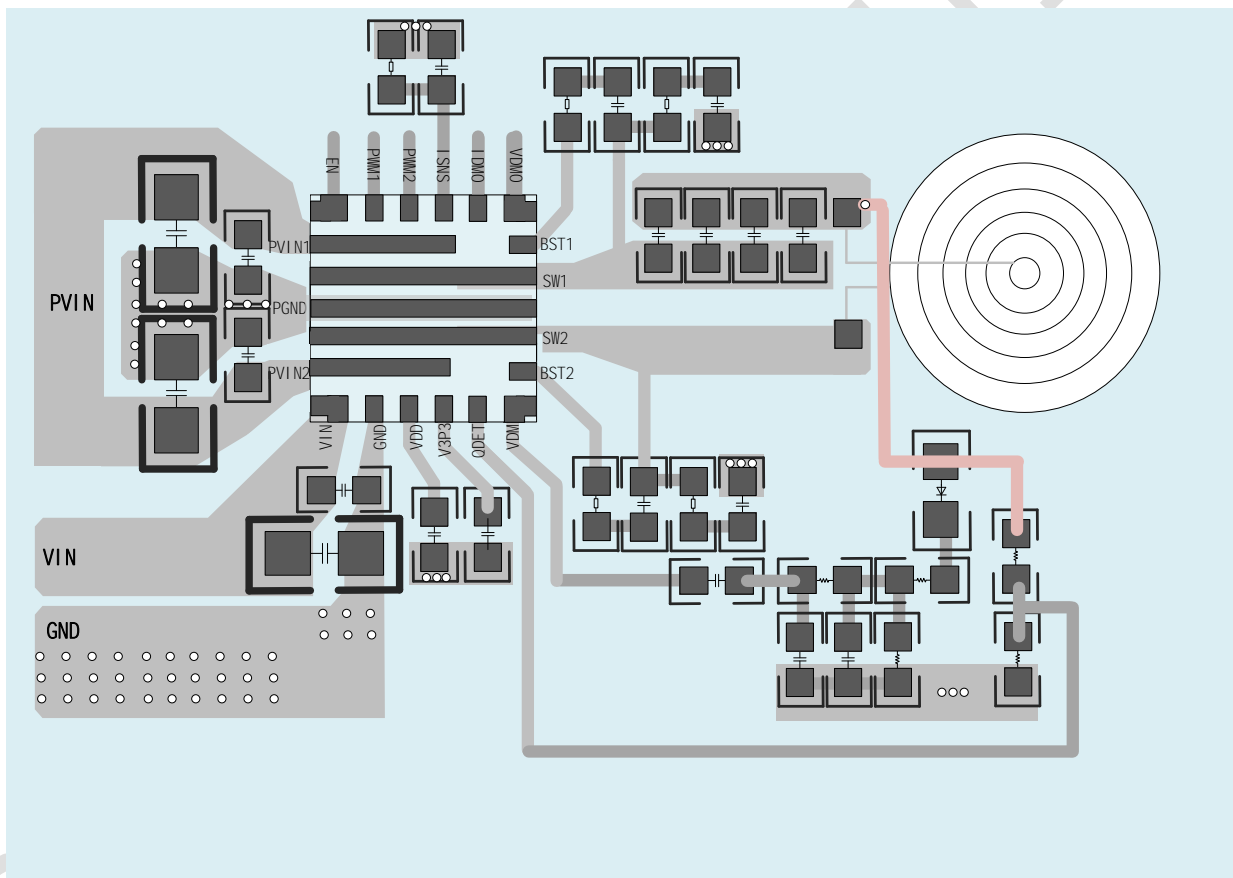
*



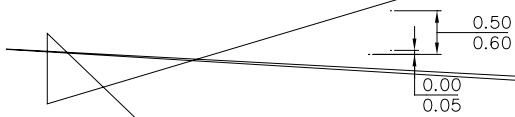
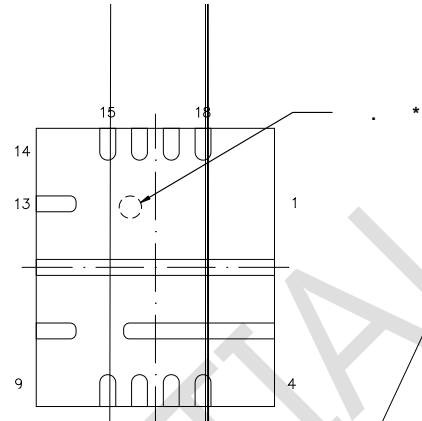
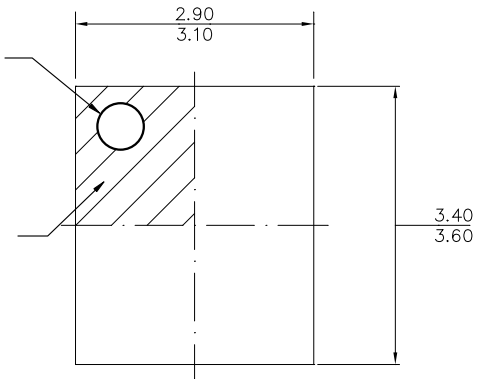
SCT.COM

SCT CONFIDE

E BD



PACKAGE INFORMATION



SCT CONFIDENTIAL

)) *)
*) . *)
-) **)

