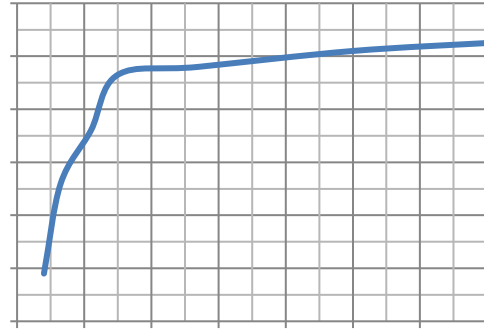
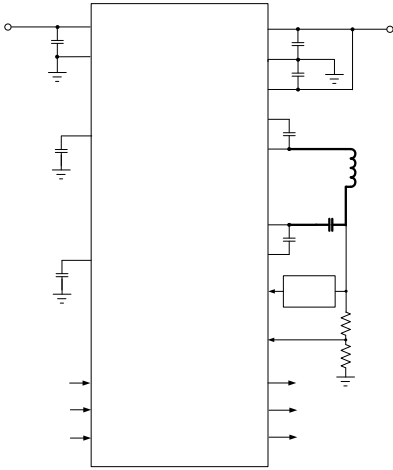


TYPICAL APPLICATION

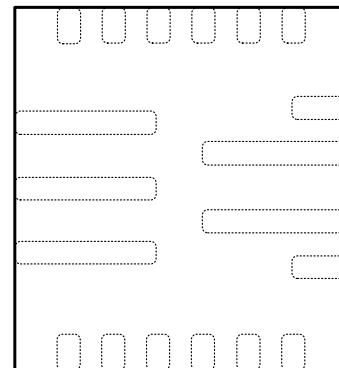


REVISION HISTORY

DEVICE ORDER INFORMATION

ABSOLUTE MAXIMUM RATINGS

PIN CONFIGURATION



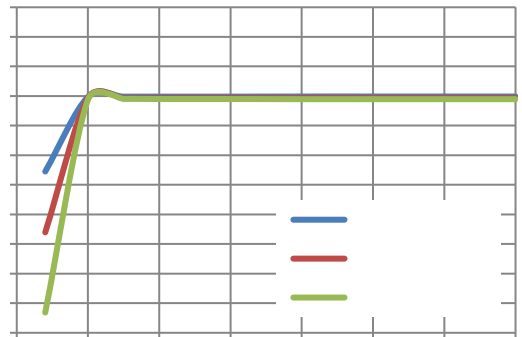
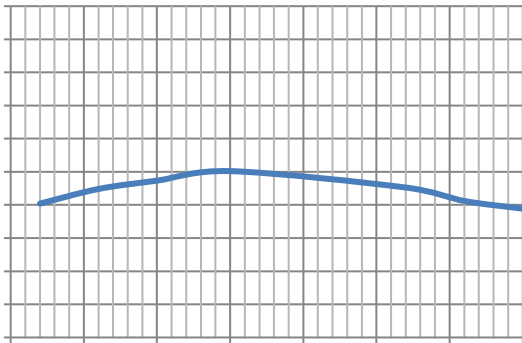
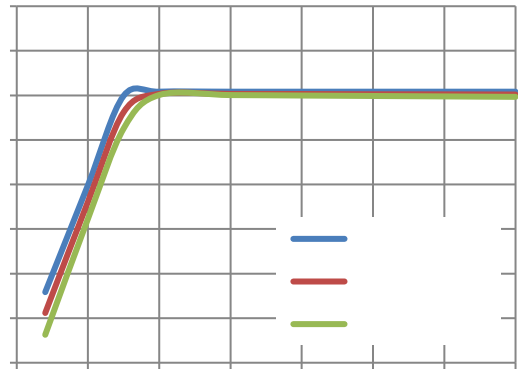
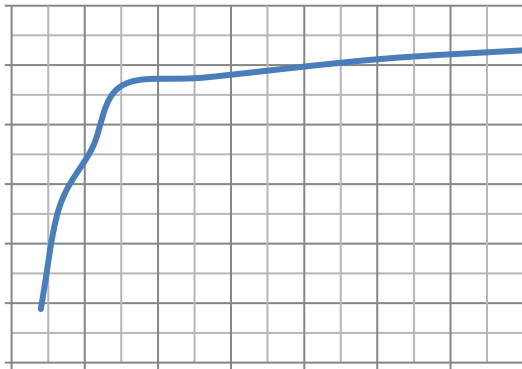
SCT CONFIDENTI

SCT 6.3

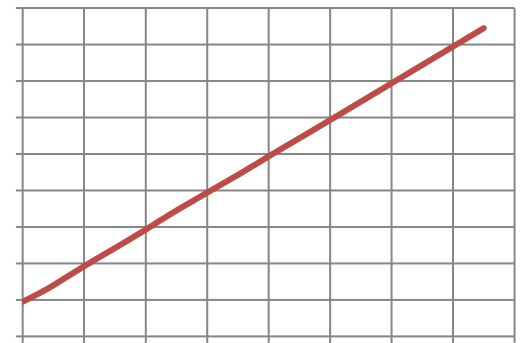
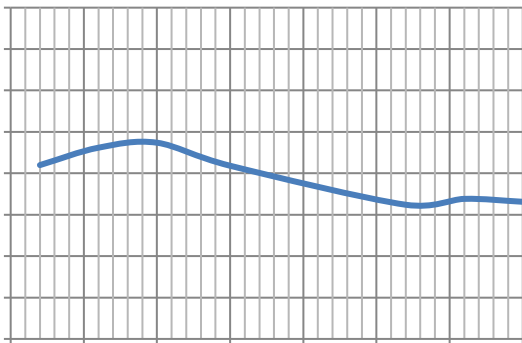
§

TYPICAL CHARACTERISTICS

& & &

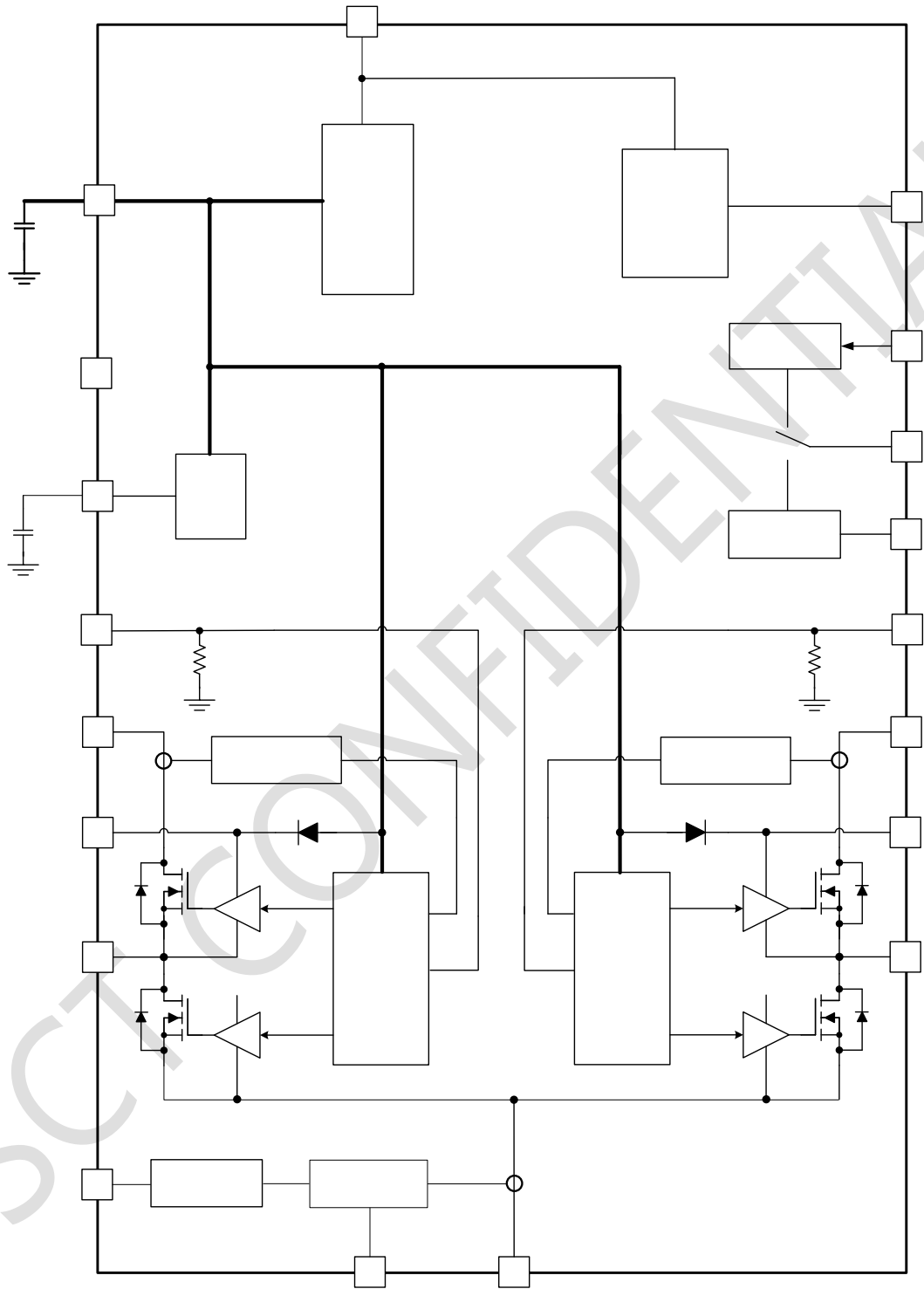


&



&

FUNCTIONAL BLOCK DIAGRAM



OPERATION

SCT CONFIDENTIAL

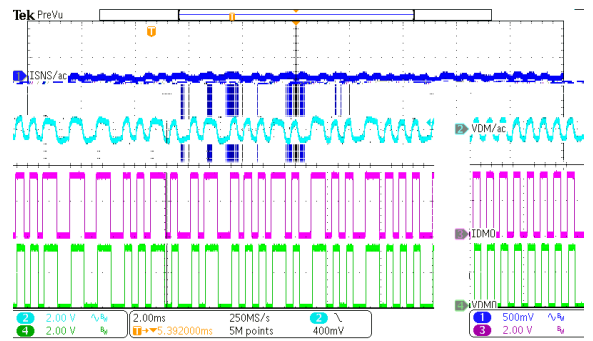
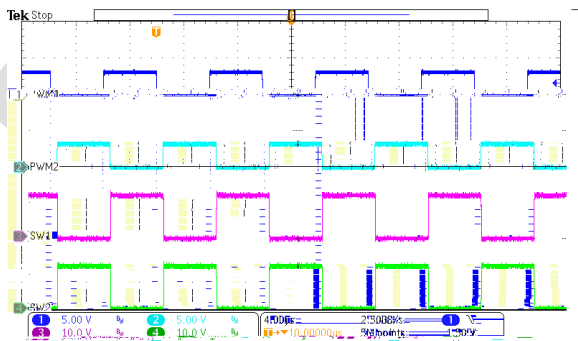
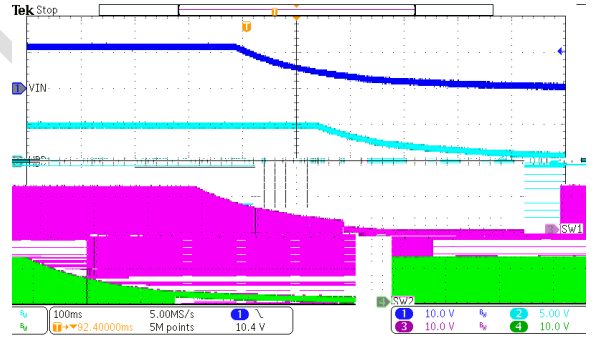
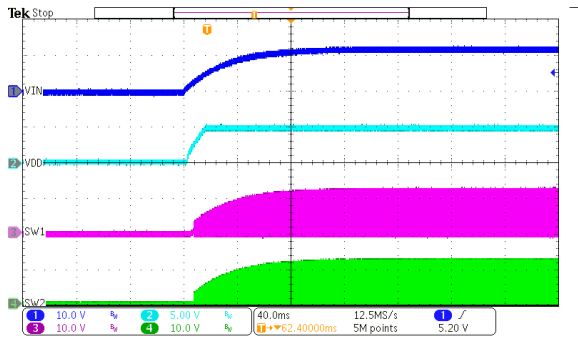
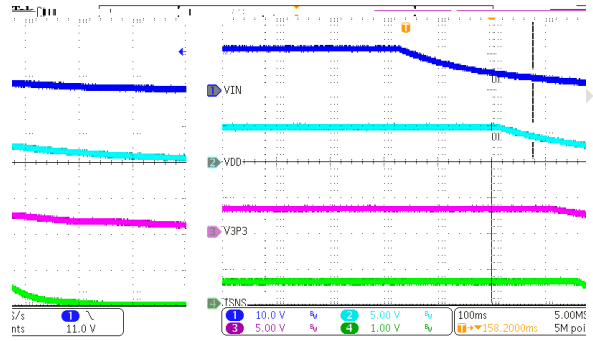
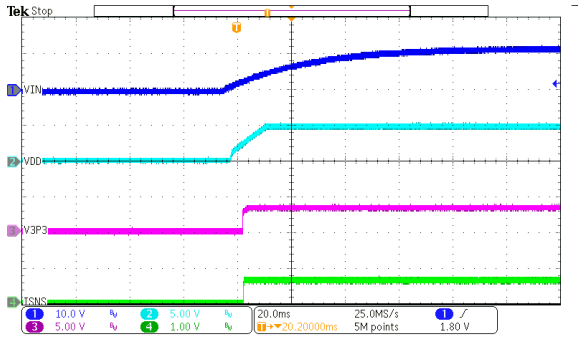
SCT CONFIDENTIAL

SCT CONFIDENTIAL

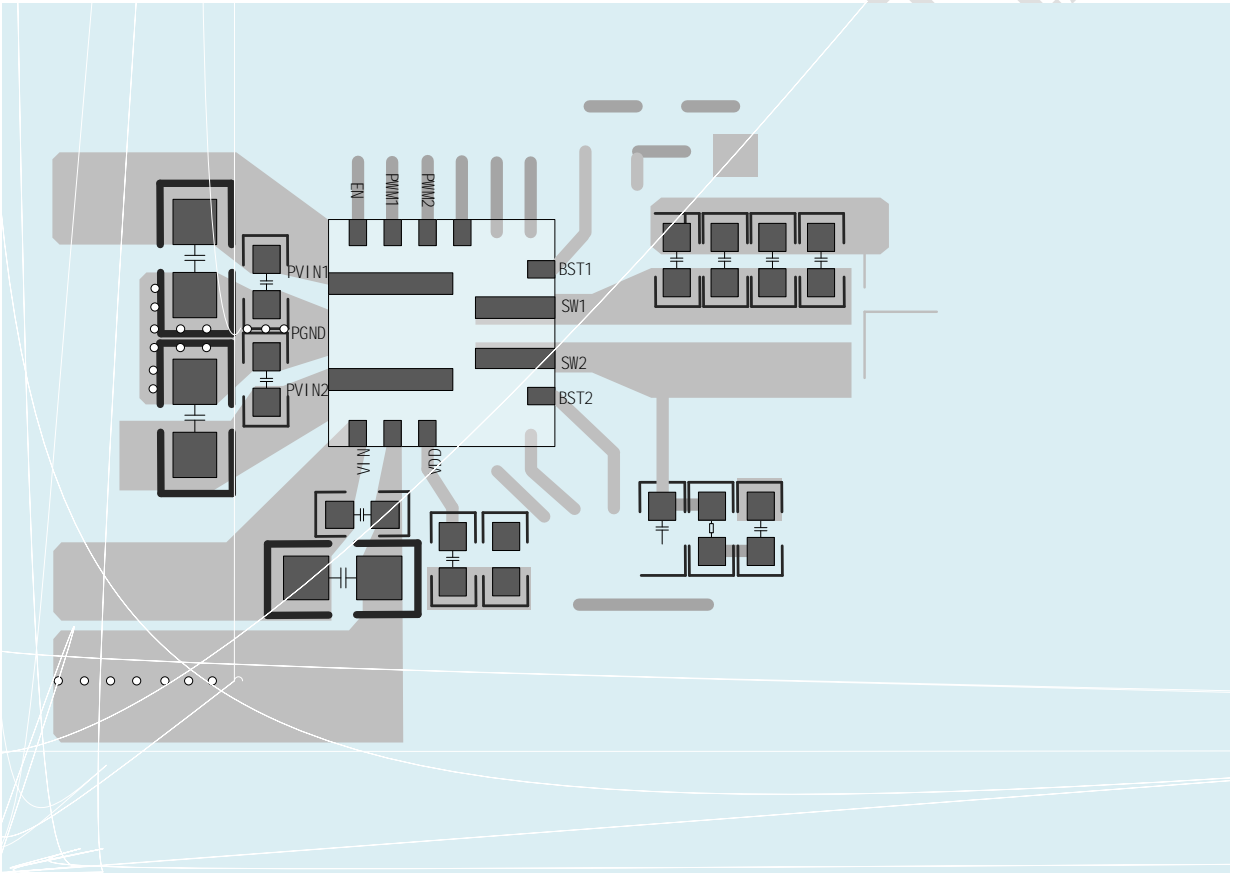
APPLICATION INFORMATION

SCT CONFIDENTIAL

& & &



& &



§

S